

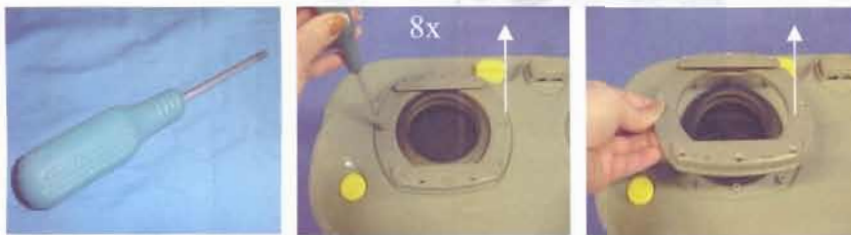
**IMPORTANT:** before placing the new lip seal, make sure that it has been treated with Thetford seal lubricant

### 1. 23721 Lip seal Cassette C200

- A. Remove sliding cover and 2 screw covers.  
**Note:** Lever off gently screw covers located on either side of the seal cover.



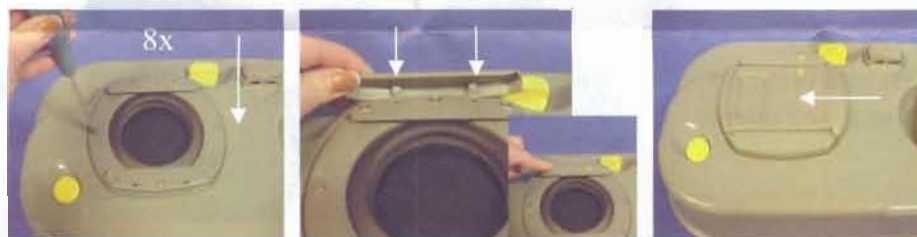
- B. Unscrew the 8 screws on the seal cover and, take the seal cover off.



- C. Place new lipseal on the waste tank.  
**Note:** Thinner flange has to face downwards towards the blade.



- D. Screw seal cover back onto the waste tank and press both screw covers back on the seal cover.



### 2. 23721 Lip seal Cassette C2/C3/C4 (Toilets produced after 15 June 2000)

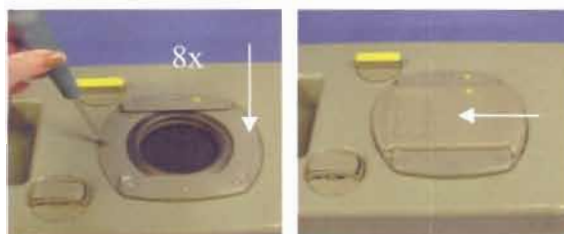
- A. Remove the sliding cover and unscrew the 8 screws on the seal cover.



- B. Place new lipseal on the waste tank.  
**Note:** Thinner flange has to face downwards towards the blade.



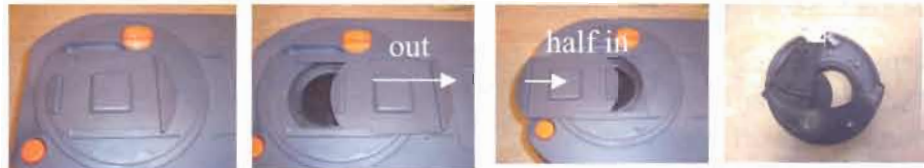
- C. Screw seal cover back onto the waste tank.



### 3. 23721 Lip seal Cassette C250/C400

#### A. For C250

Remove sliding cover, and place it in the other side of the holding tank plate. Using the sliding cover turn the plate anti-clockwise. Lift the complete plate and mechanism up and turn over.



#### A. For C400

Pull sliding cover half way out, gently turn with help of sliding cover anti-clockwise until it stops. Lift the complete plate and mechanism up and turn over.



B. Remove the screw from the blade (1). Turn the blade track away (2). Remove the blade (3)



C. Remove the 6 screws indicated. Lift seal plate up to see the lip seal and take lip seal out.



Note: Before replacing the lip seal, spray it with Thetford seal lubricant.

D. Place new lip seal and screw the mechanism back together, 6 screws. Screw blade back into position (1), and turn blade track back in position (2).



E. Place complete mechanism back into the waste tank and secure it by turning.

